



E-CLIP

The 'e' series clip with its unique geometric design offers a lightweight, low-cost rail fastening. Spring and torsion work together to provide a high clamping force and excellent resistance to rail rollover and longitudinal restraint. The 'e' clip is driven parallel to the rail and is easily installed, manually, with standard track tools, or with mechanical equipment.



Pandrol SA (Pty) rail clips can generate toe loads between 300kgf and 1250kgf, as appropriate to the application. Clip toe load is a function of bar diameter, the deflection, and the orientation of a clip in each assembly design. Pandrol SA (Pty) rail clips have a working deflection in the range of 10-14mm sufficient to compensate for the manufacturing tolerances within the rail fastening assembly.

Cost of Ownership

- Few components
- Elastic fastenings which continue to grip the rail under vibration.
- Very long life
- High Safety level and security
- Can be supplied in the self-locking anti-vandal form to prevent unauthorized removal, requiring a special tool to remove the clip.
- Proven on all types of sleepers and ballast-less tracks.
- Widely used in turnouts and crossings
- Wide range of adaptations for existing designs
- Virtually maintenance-free
- No threads to strip or corrode.
- Straightforward use in operations such as rail changing and distressing.

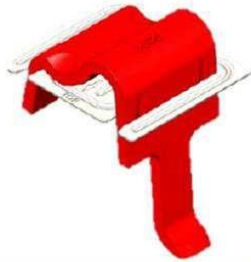
E-CLIP



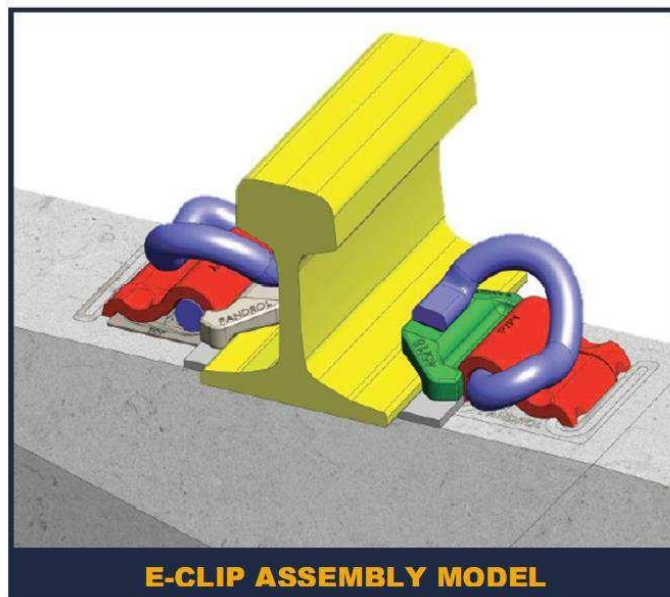
E-CLIP GPI



**SHOULDER &
COVERPLATE**



E-CLIP PAD



E-CLIP ASSEMBLY MODEL

E-CLIP GAUGE SETTING TABLE

e' CLIP FASTENING SPECIFICATIONS FOR DIFFERENT GAUGES						
SLEEPER	RAIL	OUTER	INNER	GAUGE	INNER	OUTER
PY	UIC60 / 60E1	UIC60/11/13	UIC60/00/04	1058	UIC60/00/04	UIC60/11/13
		UIC60/06/09	UIC60/06/09	1062	UIC60/00/04	UIC60/11/13
		UIC60/06/09	UIC60/06/09	1066	UIC60/06/09	UIC60/06/09
		UIC60/00/04	UIC60/11/13	1071	UIC60/06/09	UIC60/06/09
		UIC60/00/04	UIC60/11/13	1076	UIC60/11/13	UIC60/00/04
	SAR 60kg/m	T11	T0	1058	T0	T11
		T6	T6	1062	T0	T11
		T6	T6	1066	T6	T6
		T0	T11	1071	T6	T6
		T0	T11	1076	T11	T0
	SAR 57kg/m	T17	T6	1059	T6	T17
		T17	T6	1062	T11	T14
		T14	T11	1065	T11	T14
		T11	T14	1067	T11	T14
		T11	T14	1069	T14	T11
		T6	T17	1073	T14	T11
		T6	T17	1077	T17	T6
		T0	T23	1082	T17	T6
		T0	T23	1087	T23	T0
	SAR 48kg/m	T23	T17	1067	T17	T23
		T23	T17	1072	T23	T17
		T17	T23	1077	T23	T17
P2	SAR 57kg/m	T11	T0	1056	T0	T11
		T11	T0	1060	T6	T6
		T6	T6	1064	T6	T6
		T0	T11	1069	T6	T6
		T0	T11	1074	T11	T0
	SAR 48kg/m	T23	T6	1054	T6	T23
		T23	T6	1059	T11	T17
		T17	T11	1064	T11	T17
		T17	T11	1069	T17	T11
		T11	T17	1074	T17	T11
		T11	T17	1078	T23	T6
		T6	T23	1082	T23	T6
	SAR 40kg/m	T23	T6	1060	T6	T23
		T17	T11	1065	T6	T23
		T17	T11	1070	T11	T17
		T17	T11	1075	T17	T11
		T11	T17	1080	T17	T11
		T11	T17	1084	T23	T6

Siding	SAR 57kg/m	A	A	1066	A	A
	SAR 48kg/m	C	A	1060	A	C
		C	A	1066	B	B
		C	A	1072	C	A
		B	B	1072	B	B
		B	B	1078	C	A
		A	C	1084	C	A
	SAR 40kg/m	C	A	1066	A	C
		C	A	1072	B	B
		C	A	1078	C	A
		B	B	1078	B	B
		B	B	1084	C	A
	SAR 30kg/m	30A	T11	1067	T11	30A
		30B	T17	1073	T11	30A
		30B	T17	1079	T17	30B
		30C	30C	1084	T17	30B
		30C	30C	1089	30C	30C

Pandrol SA (Pty) ANTI-THEFT

Pandrol SA (Pty) supplies an anti-theft fastening system that is maintenance-friendly, and re-installable without compromising performance, which consists of an e2005 clip with an anti-theft gauge plate insulator.

Cost of Ownership

- Retrofit System
- Interchangeable with traditional e-clip
- Used with Cast and Pressed steel shoulders.
- Interlaced with existing systems.
- Built in Anti-Vandal system.
- Theft resistant, thus cost-saving
- Necessary for track safety

