

Accessories



Corner Post

For closing off work sites
Drawing Number: MC/BA/400/035



Safe Access Gate

To be placed every 40m
94/007009



Cocking Lever for Extra Insulated Fixed
 3'
 Required for fitment of fence to bullhead rail only when 3rd rail is present



Cocking Lever for Standard Telescopic
 Required for fitment of fence to bullhead rail only when 3rd rail is present
Drawing Number: MC/BA/400/052



Bungee Tool

For replacing bungees and changing tips from flatbottom to bullhead rail and back
Drawing Number: MC/BA/400/046



Storage Stillages
 Supplied with every order over 250m



Lockable Lids
 For secure onsite storage
Drawing Number: MC/BA/400/049

Available on hire from



6-8 Haxter Close, Belliver Industrial Estate, Roborough, Plymouth, PL6 7DD, United Kingdom

Tel +44 (0)1752 700601
 Fax +44 (0)1752 702353

e-mail sales@vortok.co.uk
 website www.vortok.co.uk



VORTOK International is the trading name of the Multiclip Company Ltd
 The Multiclip Company Ltd is a member of the PANDROL Group of Companies
 VORTOK is a registered trade mark



Vortok Safety Fence

*WINNER of the 2002 ALSTOM Award
 for Innovation and Safety*



*Real Protection for
 Track Workers*



Engineering Solutions for Railway Maintenance

Vortok Safety Fences

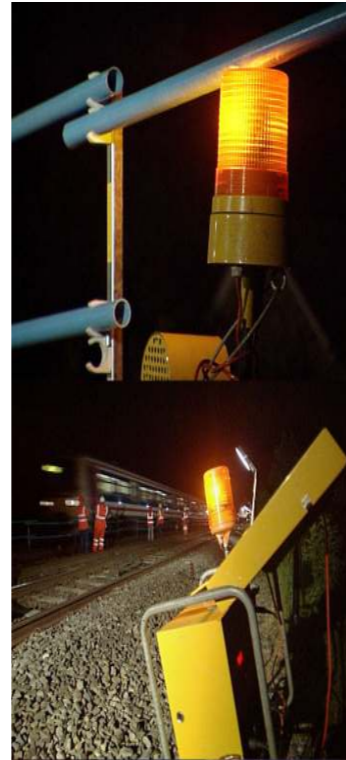


ACCEPTED BY
Network Rail

Certificate: PA05/1068

Higher train speeds permitted by Rulebook
 - Up to 100 mph 1.25m (4ft) setting
 - Over 100 mph 2.0m (6ft 6") setting

- Erected in minutes
- No ballast penetration - Clamps to the running rail foot
- Offers real physical support
- Universal application - Flat bottomed, Bull head and 3rd Rail areas
- Accessories for closing off Green Zones
- All components reusable - supplied in easy storage stillages
- Standard Telescopic can be used at ALL train speeds - set at either 1.25m (4') or 2.0m (6' 6")

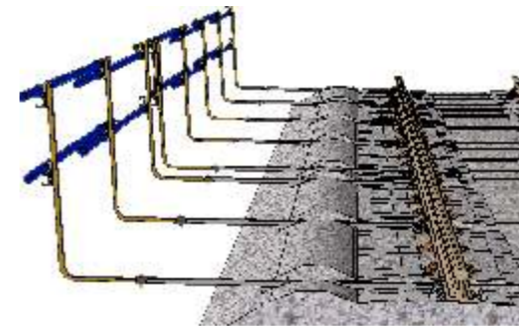


Barrier set at 4 ft (1.25m) from running rail for lines speeds up to and including 100 mph



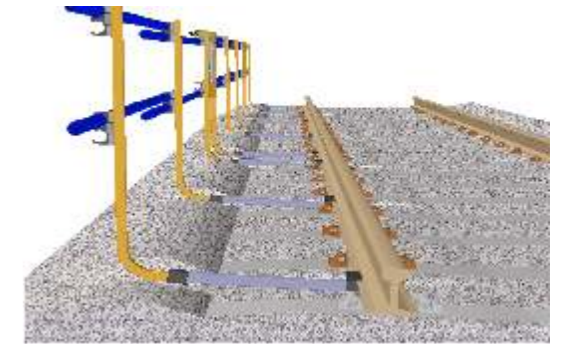
Barrier set at 6 ft6" (2m) from running rail for lines speeds over 100 mph

Safety Fence Variants



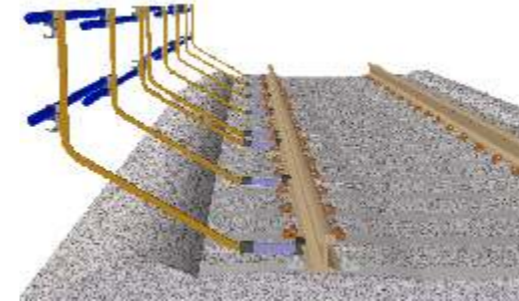
Standard Telescopic
 1.25m - 2.0m (4' - 6'6")

Can be used anywhere for creating Green Zones
 50 metre kit - 94/019029
 batches of 250 metres - 94/002001



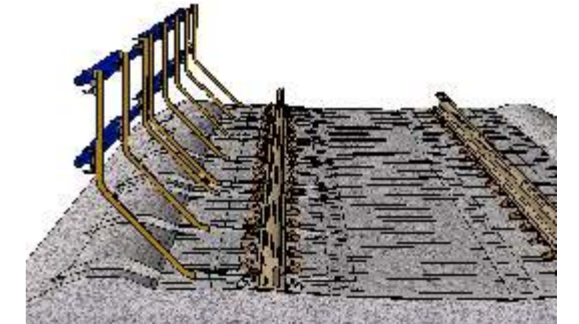
Short Telescopic
 0.9m - 1.25m (3' - 4')

For creating Green Zones at 1.25m. At 0.9m, must be used with ATWS or lookouts and 20mph.
 94/019028



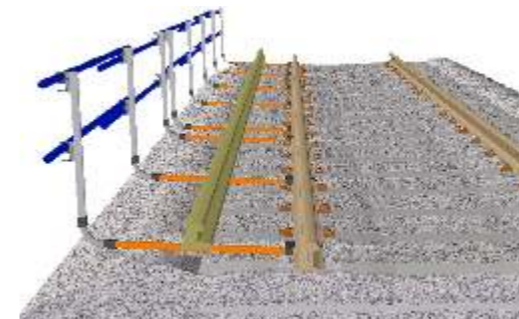
Fixed 1.25m (4')

NOT SUITABLE FOR THIRD RAIL
 For Green Zones up to 100mph in non-third rail locations only. Designed for ballast shoulder clearance.
 94/019031



Fixed 0.9m (3')

NOT SUITABLE FOR THIRD RAIL
 Not suitable for Green Zone working, must be used with ATWS or lookouts and 20mph. Designed for ballast shoulder clearance.



Extra Insulated 1.25m (4')

For even better protection in third rail areas.
 94/019033



Extra Insulated 0.9m (3')

For even better protection in third rail areas.
 Not suitable for Green Zone working, must be used with ATWS or lookouts and 20mph
 94/019032