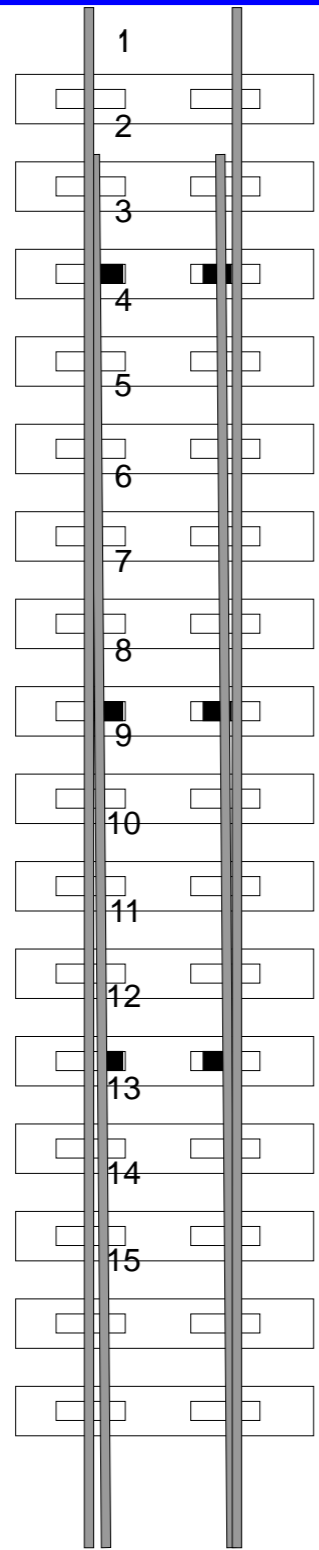


Installation



1. Roller units on sleeper number 2 or as near to the toe of the switch as possible

2. Rotorrail units should be positioned approximately 5 sleepers further back or in places where the slide chair carries the most load.

NOTE: It is not critical that rollers in positions 2 & 3 are positioned exactly as shown. If the switch blade is hogged it is acceptable to move the rollers to a more appropriate baseplate.

3. Switches categorized as E to H, a further pair of roller units are positioned towards the back of the switch where the switch blade is dragging on the dry baseplate.

NOTE: The second and, where fitted, the third pair of Rotorrails do not have to be on the same bearer.

A. Remove AS screws and clean off excess grease from baseplate.



B. Place rings over ferrules. If ferrules are damaged, replace as required. Tap ferrules down so as they are flush with the rings.



C. Offer Rotor Rail unit onto baseplate. Slide until rollers just touch the closed switch blade.



D. Place locking plate over holes ensuring serrations are facing down.



E. Replace screws in holes and tighten to correct torque.



NOTE: Vortok coils are recommended when fitting Rotorrails.

Once fitted no further routine greasing is required on slide surfaces throughout the switch but is recommended occasionally on baseplates without rollers to prevent



UNIPART RAIL
Also available in the UK from Unipart Rail



6-8 Haxter Close, Belliver Industrial Estate,
Roborough, Plymouth, PL6 7DD,
Devon. United Kingdom
Tel +44 (0)1752 700601 e-mail sales@vortok.co.uk
Fax +44 (0)1752 702353 website www.vortok.co.uk

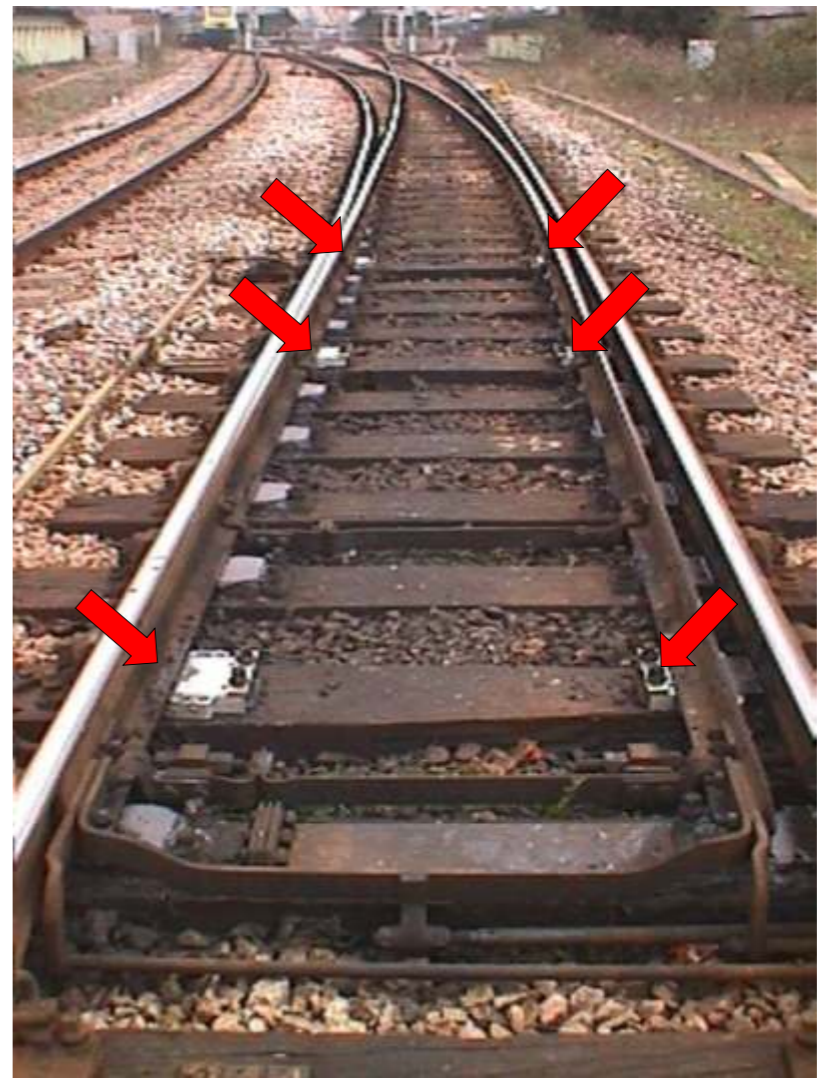
VORTOK International is the trading name of the Multiclip Company Ltd
The Multiclip Company Ltd is a member of the PANDROL Group of Companies



Vortok Rotorrail

Under License From Mazzi Technology S.R.L

Retrofit Switch Rollers



Engineering Solutions for Railway Maintenance

Vortok Rotorrail Units

No more baseplate greasing

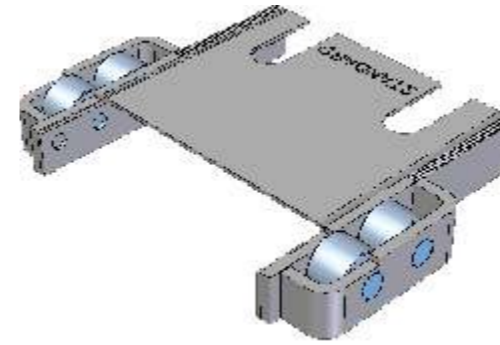


- ◆ Retrofit to existing baseplates
- ◆ Improved reliability
- ◆ Suitable for powered and manual switches
(Except train operated switches)
- ◆ Fitted in less than ½ hour
- ◆ No possession required
- ◆ No adjustment
- ◆ Maintenance free - no lubrication
- ◆ Reduced wear and tear
- ◆ Range of sizes for vertical, inclined, bullhead, switch diamond and others
- ◆ Suitable for switch lengths A-H

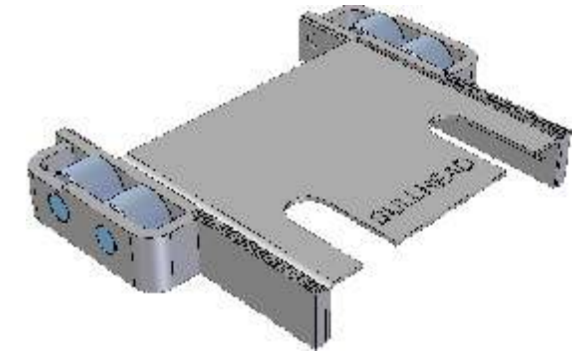
Accepted BY
Network Rail

Certificate: PA05/00991

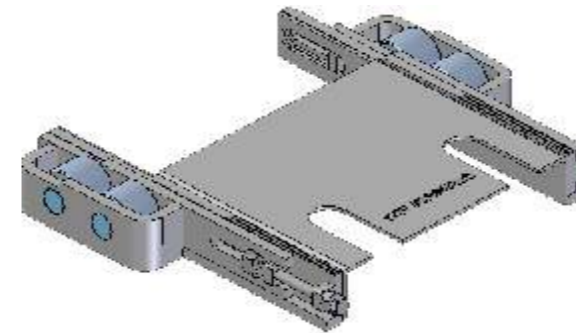
Rotorrail Unit Variants



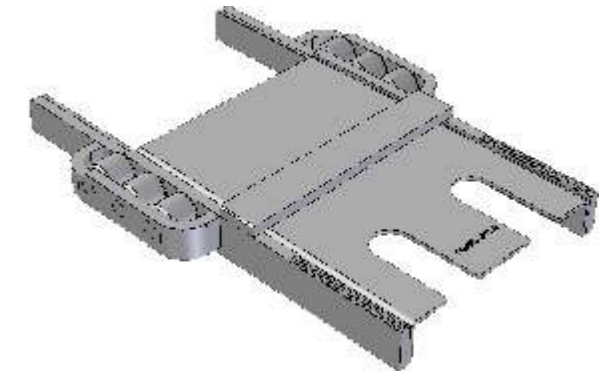
FLATBOTTOM VERTICAL AND INCLINED
057/009825



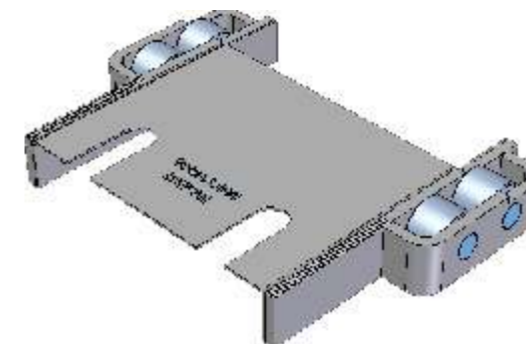
BULLHEAD
057/009827



SWITCH DIAMOND
(Not Accepted by Network Rail)



80lb TRAM



SHALLOW DEPTH UIC 54
057/009826

Rotorrail units are sold as single items. Each unit comes with 2 spacer washers and a locking plate. For switches A-D four units are required and for switches E-H six units are required.