

RAILTECH

INTERNATIONAL

© GROUPE DELACHAUX

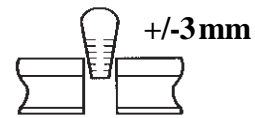
PROCESS MANUAL

FOR ALUMINOTHERMIC RAIL WELDING

SAR30 - SAR 40 - SAR 48 - SAR 48/ SAR 40- SAR 57 - SAR 60

WGW PROCESS

GAP 68 mm



LUTING PASTE



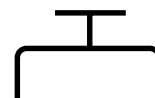
ONE-SHOT CRUCIBLE



AIR - PETROL



CONTROLLED COOLING



RAILTECH

INTERNATIONAL

© GROUPE DELACHAUX

CONTENTS

	Pages
1 - Preparing the joint	3
2 - Adjusting the joint	3
3 - Welding Kit	4
4 - Setting the moulds and luting	4
5 - Preheating	6
6 - Crucible	8
7 - Casting	8
8 - Withdrawing the slag tray	8
9 - Shearing preparation	9
10 - Shearing	9
11 - Hot grinding	9
12 - Cold grinding	10
13 - Finishing weld	10
14 - Marking and tracing	10
15 - Preheating tools	11

PREFACE

This manual is made to help welders and supervisors of welding operations, organizations, and follow-up inspections.

However it does not replace the Railways specification documents concerning thermite welding and inspections.

SAFETY

Whenever possible work within the track
Wear gloves, goggles, leggings, safety shoes.

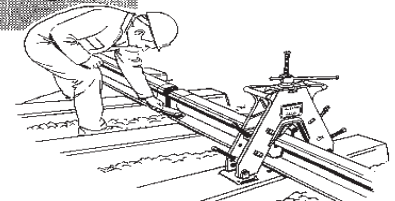
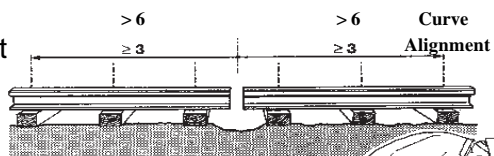
1 - PREPARING THE JOINT TO BE WELDED

- Undo fasteners on either side of the joint to be welded

- on 3 sleepers in straight track
- on 6 sleepers in curve

- Clean and brush the ends of the rail in order to eliminate all traces of grease or oxydation.

- Check the dimensional quality and note the discrepancies.



2 - AJUSTING THE JOINT

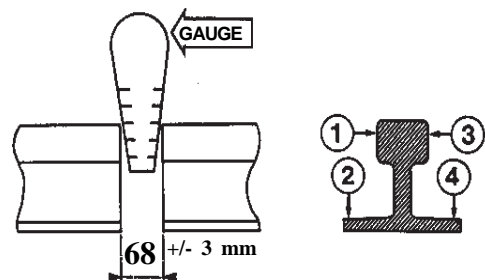
2.1 - Welding gap

- Welding gap : **68 +/- 3 mm**

The four measurements 1-2-3-4 taken must fall within the tolerance span of 65 to 71 mm.

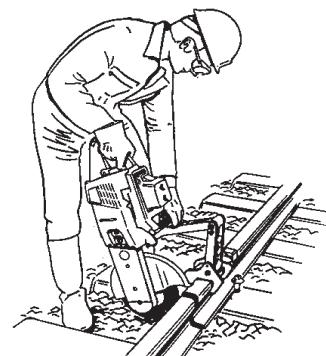
Rail cuts are to be perpendicular and within the above tolerance range.

It is recommended to use a rail saw to cut rail.



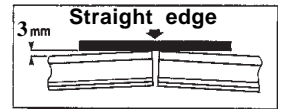
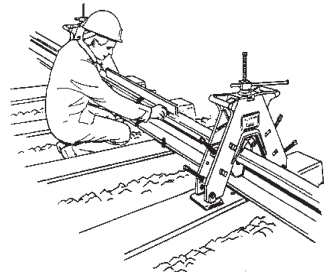
Caution !

Strictly follow the safety instructions (manual) concerning the use of your saw.



2.2 - Vertical Alignment

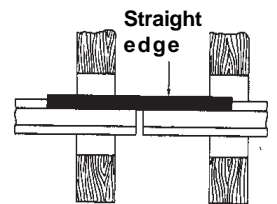
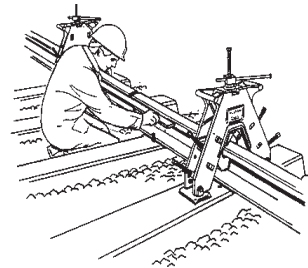
- Prior to welding, the rails must be vertically adjusted in order to form a peak, measurement between straight edge ends and rail is to be 3 mm.



2.3 - Horizontal alignment

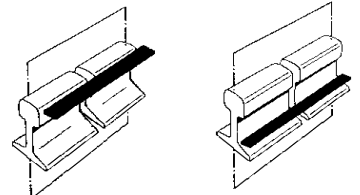
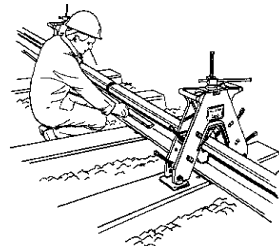
- Line rail, gage side to match head, web and base over the length of the entire straight edge length.

Nota : in curves with a radius < 500 m use gauge tie rods



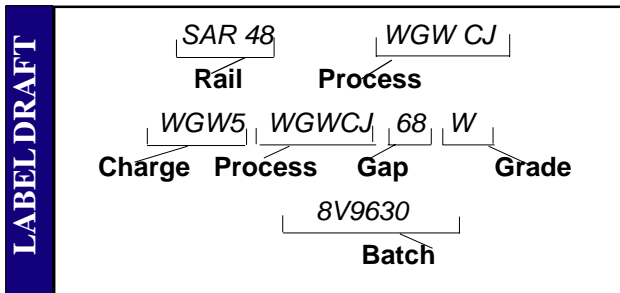
2.4 - Twisting of the rails

- Inclination of the two rails must be carefully checked in order to eliminate rail twist (match head, web and base)



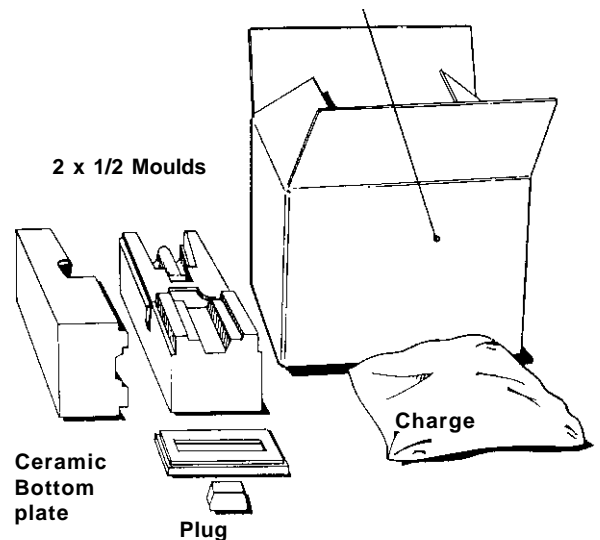
3 - WELDING KIT

The reference numbers indicated on this label must be recorded. No inquiries shall be taken into consideration without this information.



Welding portion grades

- W = Z80
- 320 Cr = Z110
- HH = Z120



RAILTECH

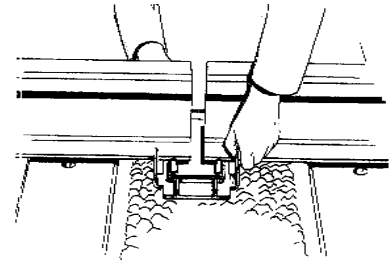
INTERNATIONAL

© GROUPE DELACHAUX

4 - SETTING THE MOULDS AND LUTING

4.1 - Preparing and luting the sand base plate

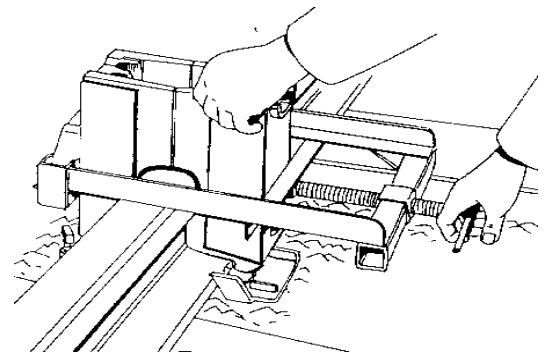
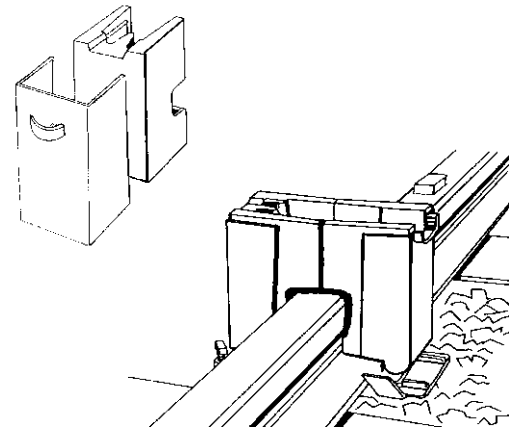
- Place the base briquet in the base plate. Make sure that it sits in the plate correctly (*no wobbling*).
- In the recesses on either side of the briquet, apply a strip of clay cement. *Not thicker than a pencil*
- Engage the base plate assembly on both rail ends.
- Verify that the base plate is perfectly centered. Then tighten the bolts by hand.



4.2 - Setting the moulds

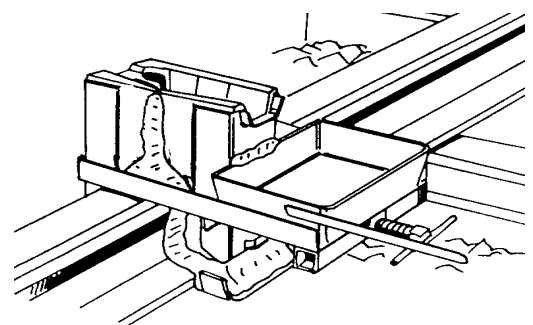
- Place each mould jacket on respective half mould.
- Place half mould (*Centering to the gap and base briquet*).
- Place second half mould and apply mould clamp.
- Make final adjustment so two half moulds are perfectly centred.

Be carefull not to break the mould by over tightening the clamp. We recommend to cover the top of mould with cardboard while luting.



4.3- Luting the moulds :

- Seal crevices between mould and rail, and back it up with larger bead starting at the heel of the mould.
- After luting, place the slag tray and seal the part between tray and mould.
- Protect the spout and thread of the mould clamp with paste.



RAILTECH

INTERNATIONAL

© GROUPE DELACHAUX

5 - PREHEATING

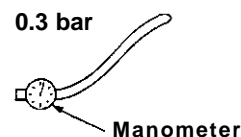
The good execution of preheating is essential for the life span of the weld. It is thus compulsory to respect carefully the specifications described below.

Preheating is an operation of major importance. Its function lies in the elimination of moisture from the moulds and to raise the temperature of the rail ends.

5.1 - Equipment

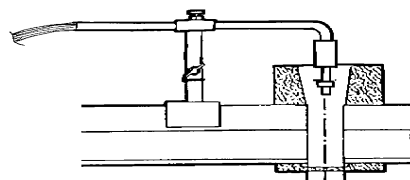
- We recommend to operate with :

- 1 preheating unit
- 1 petrol hose 5 m Ø 20 mm
- 1 burner



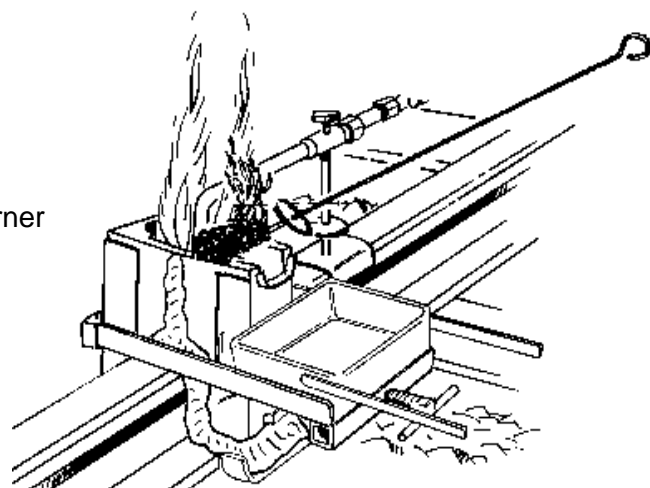
5.2 - Preheating adjustment

- Place the burner in its support and centre it in the middle of the moulds.
- The nozzle of the burner must be centered in the middle of the moulds according to the gap and the middle axis of the rail.
- Do not damage the inner surfaces of the moulds with the nozzle (to avoid sand fall).



5.3 - Burner lighting

- Start the preheating unit
- Open petrol tab
- Light the torch and put it on the moulds aside the burner *(until the air petrol mixture in the moulds is ignited).*

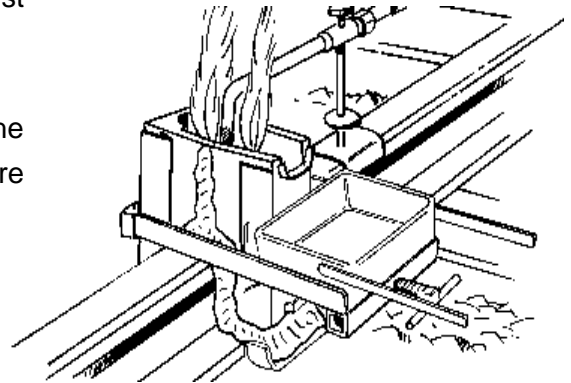


RAILTECH

INTERNATIONAL

© GROUPE DELACHAUX

- Remove the torch and put it back in its cover
- Adjust the air petrol flow to obtain a correct carburation (See *instructions of the unit manufacturing*), get blue flames at the exhaust of the burner and yellow flames at the exhaust of the pipes (length : 10/15 cm)
- Place the plug by the exhaust with the upper side against the flame, so the plug can be warmed up (in doing so, take care not to block the exhaust).



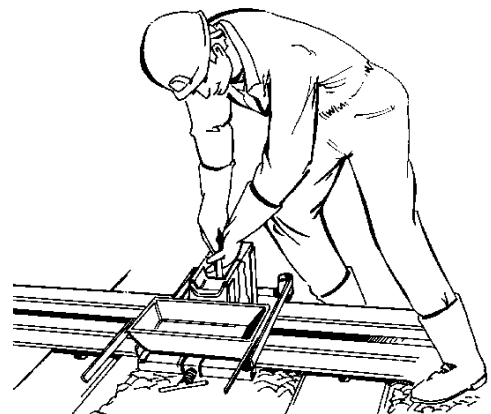
5.4 - Preheating time

- Time preheating is :
 - SAR 40/48 8 minutes
 - SAR 57/60 9 minutes

During this time prepare the crucible (voir § 6)

5.5 - Burner removing

- Once the preheating is completed,
 - respect strictly the safety instructions :*
 - 1) Remove the burner
 - 2) Turn off the taps on the petrol tank
 - 3) Wait for flame extinguishing
 - 4) Stop the engine
- Insert the plug by hand.



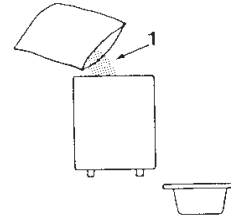
Caution !

No waste of time shall occur between the end of preheating operation and igniting.

6 - ONE-SHOT CRUCIBLE

Preparing the one-shot crucible while preheating.

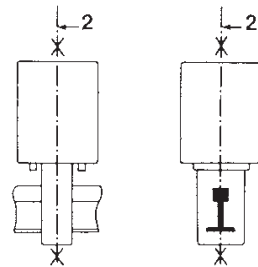
- Open the bag containing the welding charge,
- Pour the relevant aluminothermic charge into the one-shot crucible,
- Place the one-shot crucible near the rail ends and get an ignitor,



7 - CASTING

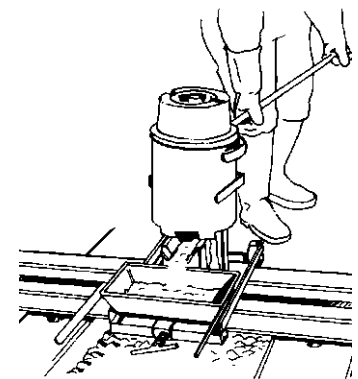
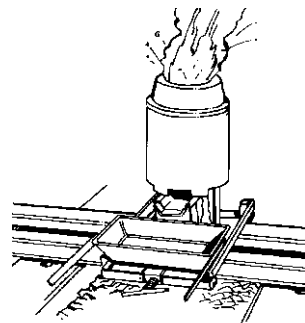
7.1 - As soon as preheating is over

- Place the crucible on top of the moulds. Make sure the crucible spout is centred in both directions.



7.2 - Reaction

- Ignite the ignitor by inserting it in a hot riser holes,
- Insert the ignitor a maximum of 25 mm into the charge mound,
- Put the lid on the crucible,
- The reaction develops in a few seconds, and the pouring will automatically take place at the end of the reaction.

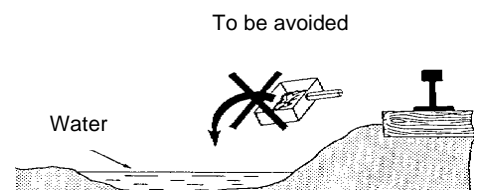


8 - REMOVAL OF THE SLAG TRAY

- The crucible is then removed by means of a special fork after 5 minutes of completion of pouring.
- Break the solidified slag on slag tray and mould jacket (5 minutes after the pour) and then remove the slag tray.

Caution !

The slag tray must be removed only after its content has fully solidified. Place slag tray with hot content on a dry spot (not on sleepers). Do not place or throw slag tray with hot content on wet surface or into water.



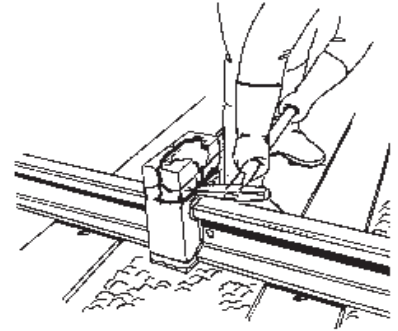
RAILTECH

INTERNATIONAL

© GROUPE DELACHAUX

9 - SHEARING PREPARATION

- After crucible and slag tray have been removed the base plate, mould clamp and mould jacket can be taken off.



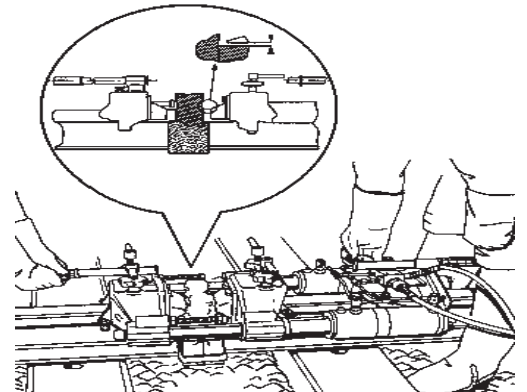
10 - SHEARING

Shearing with a sledge hammer and hot cut chisel is to be avoided

It is proposed to shear with a shearing machine. This method insures a better profile of the weld. Blades must be adjusted in height, at a minimum of 3 mm over the running surface.

This operation may take place when the weld has solidified at approximately at 9 and a halve minutes after pouring

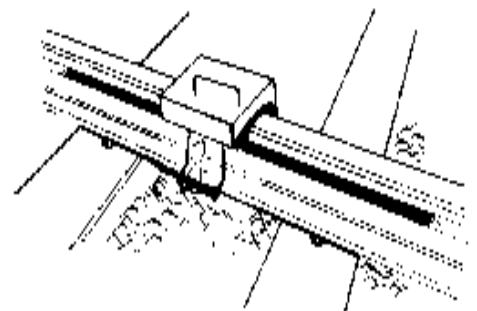
- Clean the sand around the excess metal using a metallic brush
- Place the shear machine on the rail
- Activate the lever for shearing
- Remove the shearing machine rapidly after use
- Bend inside risers to allow for grinding



Controlled cooling

The weld for 350LHT(HH grade 1200) and 320CR (Cr - Mn grade 1100) requires controlled cooling :

- Put the thermal blanket on immediately after shearing,
- Keep it on for **8 minutes**.



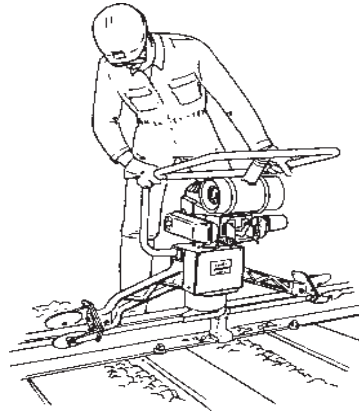
RAILTECH

INTERNATIONAL

© GROUPE DELACHAUX

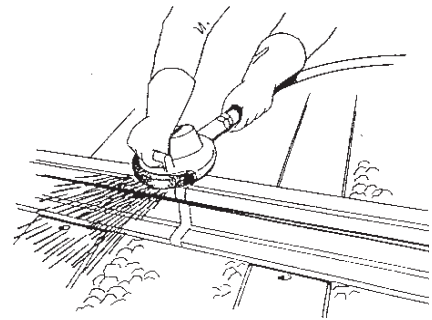
11 - HOT GRINDING

- Grind the running surface and leave to 1,5 mm. Grind the sides flush.



12 - COLD GRINDING

- After weld has cooled, grind running surface flush,



13 - FINISHING WELD

- Remove rail raisers, trackjacks or wedges after weld has cooled to 370°C,
- Clean weld from mould debris,
- Grind riser stumps and check for defects.

14 - MARKING

- Mark and record data according to Spoornet specifications

RAILTECH

INTERNATIONAL

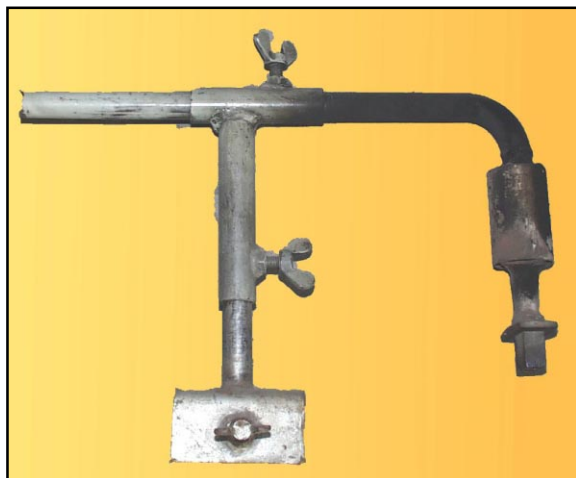
© GROUPE DELACHAUX

15 - PREHEATING TOOLS



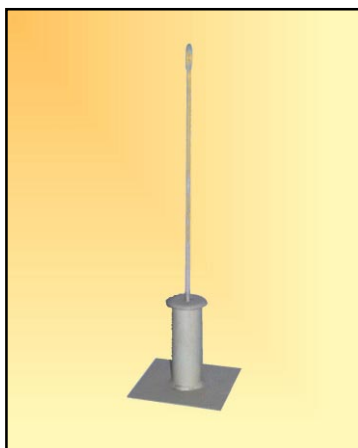
Preheating unit

11211020



Buner 01
Burner hose
Burner support

S0000126
39960002
S0000127



Torch

S0000146